

# WELCOME



The Tahoe Donner Trail System features over 60 miles of trails across 5,000 acres of epic Sierra Nevada terrain. It is the ultimate playground for hikers, trail runners, mountain bikers and equestrians.

The Tahoe Donner Trail Crew works to perform revegetation efforts, reduce erosion and implement best management practices for a resilient and healthy ecosystem. Their ongoing stewardship of the trail system continues to provide recreation opportunities. Please observe signage and stay on designated trails to avoid disturbing sensitive areas undergoing revegetation or erosion control.

Trails can be easily accessed from the Alder Creek Adventure Center, Trout Creek Recreation Center, Glacier Way, Town of Truckee Trout Creek Class 1 Bike Path trailhead, nearby street connections and other marked trailheads.

## NEW PROGRAM FOR SUMMER 2021

Tahoe Donner has introduced an Adaptive Trail Management Pilot Program for the summer of 2021 with a goal of improving understanding of member perspectives and experiences as well as increasing trail safety and enhancing trail flow.

The pilot program includes:

- Designated trails for hiker-only, hiker/equestrian and hiker/biker access
- Designated directional one-way trail
- The majority of trails continuing to be multi-directional and multi-use
- On-site ambassadors to educate, observe and assist with trail-user surveys
- New trailhead kiosks and signage to communicate pilot program objectives and help with wayfinding

Learn more at [tahoedonner.com](http://tahoedonner.com).

## Your Health is Our Number One Priority



# TAHOE FOREST HEALTH SYSTEM

[tfhd.com](http://tfhd.com) | (530) 587-6011

## TRAIL USE INSTRUCTIONS



**TRAILS OPEN FROM SUNRISE TO SUNSET**



**GO SLOW + SAY HELLO**  
ANNOUNCE YOURSELF TO OTHER TRAIL USERS



**TRAVEL AT A SAFE SPEED**  
STAY IN CONTROL; RESPECT SLOW ZONES



**SLOW DOWN WHEN PASSING**  
ANIMALS AND OTHER TRAIL USERS MAY BE UNPREDICTABLE



**BE AWARE OF YOUR SURROUNDINGS**  
LOOK AND LISTEN FOR OTHER TRAIL USERS OR WILDLIFE



**KEEP ONE EARBUD OUT**  
STAY PRESENT TO AVOID HAZARDS



**REPORT HAZARDS**  
CALL (530) 414-8166 TO REPORT TRAIL PROBLEMS, VANDALISM, SAFETY ISSUES OR AGGRESSIVE ANIMALS

## FOR EMERGENCIES, CALL 9-1-1



**NO FIRES**



**NO SMOKING**



**NO FIREWORKS OR FIREARMS**



**NO CAMPING OR OVERNIGHT PARKING**



**NO DRONES**

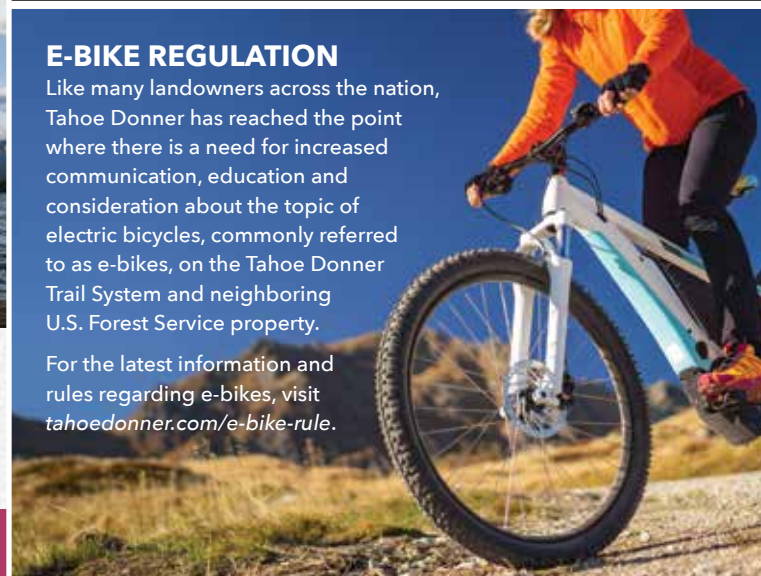


**MOTORIZED VEHICLES PROHIBITED**

### E-BIKE REGULATION

Like many landowners across the nation, Tahoe Donner has reached the point where there is a need for increased communication, education and consideration about the topic of electric bicycles, commonly referred to as e-bikes, on the Tahoe Donner Trail System and neighboring U.S. Forest Service property.

For the latest information and rules regarding e-bikes, visit [tahoedonner.com/e-bike-rule](http://tahoedonner.com/e-bike-rule).



## YIELD ETIQUETTE



Expect to come across fellow recreationists each time you head out on the trails. Although common sense goes a long way when using busy trails, all trail users should observe the following yield etiquette.



**UPHILL TRAFFIC HAS RIGHT OF WAY**



**HORSEBACK RIDERS HAVE RIGHT OF WAY**

Equestrian traffic has the right of way but should be prepared for inexperienced trail users who are unfamiliar with how to act around horses. Horseback riders should avoid high-traffic and multi-use trails whenever possible.



**HIKERS + TRAIL RUNNERS MUST YIELD FOR HORSEBACK RIDERS**

Foot traffic should step to the downhill side of the trail to let horses pass. Always announce your presence when approaching those on horseback to avoid spooking the animals.



**BIKERS MUST YIELD FOR HIKERS + HORSEBACK RIDERS**

Bike traffic should stop, get off bikes and step to the downhill side of the trail to let horses or hikers pass. Always announce your presence when approaching people and horses on the trail.



**DOGS YIELD TO ALL TRAIL USERS**

## DOG INFORMATION



**KEEP DOGS ON LEASH**  
DOGS MUST BE ON LEASH AT ALL TAHOE DONNER AMENITIES AND COMMON AREAS



**KEEP DOGS UNDER VOICE COMMAND**  
DOGS UNDER VOICE CONTROL ARE PERMITTED OFF LEASH ON DESIGNATED TRAILS



**DO NOT LET DOGS APPROACH OTHERS**



**PICK UP AFTER YOUR PET**  
DISPOSE IN TRASH CANS

## BE RESPECTFUL



After the 642-acre purchase of Crabtree Canyon in May 2016, Tahoe Donner Association's open space expanded to 5,018 acres. The private lots and residences of Tahoe Donner make up a total of 2,358 acres. When combined, the size of Tahoe Donner is 7,376 acres. Much of Tahoe Donner's owned acreage is open space, and the board, committees and management are committed to protecting and enhancing the area for long-term stewardship and sustainable recreation.

There are several neighbors that access their property via Tahoe Donner. This includes private lots and residences, the U.S. Forest Service, Tahoe National Forest, the Euer family, the Donner Euer Valley Corporation, the Truckee Donner Land Trust and other large landowners.

The private land adjacent to Tahoe Donner is not accessible to Tahoe Donner members or the public. Please obey the boundary signs. Do not trespass.



**LEAVE THE LAND BETTER THAN YOU FOUND IT**



**LEAVE NO TRACE**  
DEPOSIT WASTE IN APPROVED RECEPTACLES OR PACK OUT



**NO TRESPASSING**  
RESPECT SIGNS AND PRIVATE PROPERTY

## BE PREPARED



**CARRY A CHARGED CELL PHONE**



**TAKE WATER, SNACKS + SUNSCREEN**



**BE PREPARED FOR RAPIDLY CHANGING WEATHER**



**MAY BE ICY**  
WATCH YOUR STEP AND STAY AWARE OF SURROUNDINGS

## PROTECT THE ENVIRONMENT



**STAY ON TRAILS**



**STAY OFF MUD**



**STAY OFF WETLANDS**



**BE AWARE OF WILD ANIMALS**  
DO NOT DISTURB WILDLIFE



**PREVENT SPREADING SEEDS**



# SUMMER TRAIL MAP

HIKING | BIKING | EQUESTRIAN

### TRAILS

(530) 582-9672  
[tahoedonner.com/trails](http://tahoedonner.com/trails)  
[trails@tahoedonner.com](mailto:trails@tahoedonner.com)



### BIKEWORKS

(530) 582-9694  
[tahoedonner.com/bikeworks](http://tahoedonner.com/bikeworks)  
[bikeworks@tahoedonner.com](mailto:bikeworks@tahoedonner.com)



### EQUESTRIAN

(530) 587-9470  
[tahoedonner.com/equestrian](http://tahoedonner.com/equestrian)  
[equestrian@tahoedonner.com](mailto:equestrian@tahoedonner.com)



### ALDER CREEK ADVENTURE CENTER

(530) 587-9470  
15275 Alder Creek Road,  
Truckee, CA 96161

### TAHOE DONNER ASSOCIATION

(530) 587-9400  
11509 Northwoods Boulevard,  
Truckee, CA 96161

## TAHOEDONNER.COM

## WAYS TO GIVE BACK



**VOLUNTEER**  
PARTICIPATE IN TRAIL WORKDAYS, THE AMBASSADOR PROGRAM AND ENCOURAGE OTHERS TO DO THE SAME



**TRAIL USE FEE**  
DONATE FOR TRAIL UPKEEP

### SUGGESTED TRAIL USE DONATIONS FOR NON-MEMBERS

<b>ADULTS \$5 PER DAY USE</b>	<b>CHILDREN \$2 PER DAY USE</b>
<b>NOTE: A \$15 EQUESTRIAN DAY PASS FOR NON-MEMBERS IS REQUIRED</b>	

Donations may be made at Alder Creek Adventure Center, Bikeworks and Member Services.

GET INVOLVED AND PARTICIPATE IN OUR TRAIL EVENTS. VISIT [TAHOEDONNER.COM/TRAILS](http://TAHOEDONNER.COM/TRAILS) FOR MORE INFORMATION.

## TRAIL USER SAFETY + RESPONSIBILITY

Mountain biking, equestrian, hiking and other recreational activities on the Tahoe Donner Trail System offer a range of challenges and adventures. Trail users can choose gentle scenic routes or challenging singletrack descents.

Be aware of the risks including but not limited to varying terrain, natural and man-made obstacles, vehicles, animals, insects, other trail users and changing weather.

Regardless of what type of terrain you select, remember there are elements of risk in these recreational activities. Common sense and personal awareness can help to create a great trail experience for everyone. Your knowledge, decision making and actions contribute to your safety and others.

Tahoe Donner trail users understand and acknowledge that mountain biking, equestrian, hiking and other recreational activities on the trail system are hazardous sports with many inherent risks, and trail users assume all risks of severe personal injury including death as well as damage to or loss of property arising from participation in these sports.





# TAHOE DONNER TRAIL SYSTEM

Please report any trail problems, vandalism, safety issues or aggressive animals to the association by calling (530) 414-8166.

**FOR EMERGENCIES, CALL 9-1-1**

**KNOW YOUR EVACUATION ROUTE. HAVE A PLAN.**  
LEARN MORE AT [TAHOEDONNER.COM/PREPAREDNESS](http://TAHOEDONNER.COM/PREPAREDNESS)

### LEGEND

	MILE MARKER		TAHOE DONNER TRAILHEAD
	DOUBLETRACK TRAIL		NORTHWOODS POOL (PRIVATE)
	PAVED CLASS 1 BIKE TRAIL		TENNIS CENTER (PRIVATE)
	SINGLETRACK TRAIL		CAMPGROUND
	SECONDARY ROAD		EQUESTRIAN CENTER
	PRIMARY ROAD		BIKEWORKS
	TAHOE DONNER BOUNDARY		GOLF COURSE
	GOLF COURSE		TROUT CREEK REC CENTER (PRIVATE)
	LAKE/POND		BEACH CLUB MARINA (PRIVATE)
	STREAM		WARMING HUTS
	40-FOOT CONTOURS		RESTAURANT
	PRIVATE PROPERTY		DOWNHILL SKI RESORT
	TAHOE NATIONAL FOREST		EVACUATION ROUTE
	TRUCKEE DONNER LAND TRUST (OPEN TO PUBLIC)		

### TRAIL DIFFICULTY RATINGS

These trail ratings describe the general degree of challenge found within the Tahoe Donner Association trail network. These are general ratings, though, and most trails have a varied level of difficulty. There are inherent risks associated with trail use; know your ability and stay within it. Always use proper caution when enjoying the trails.

**GREEN CIRCLE TRAILS** tend to have lower average grades on wider tread with fewer technical characteristics, gradual turns and long lines of sight.

**BLUE SQUARE TRAILS** fall somewhere in between green circle and black diamond trails.

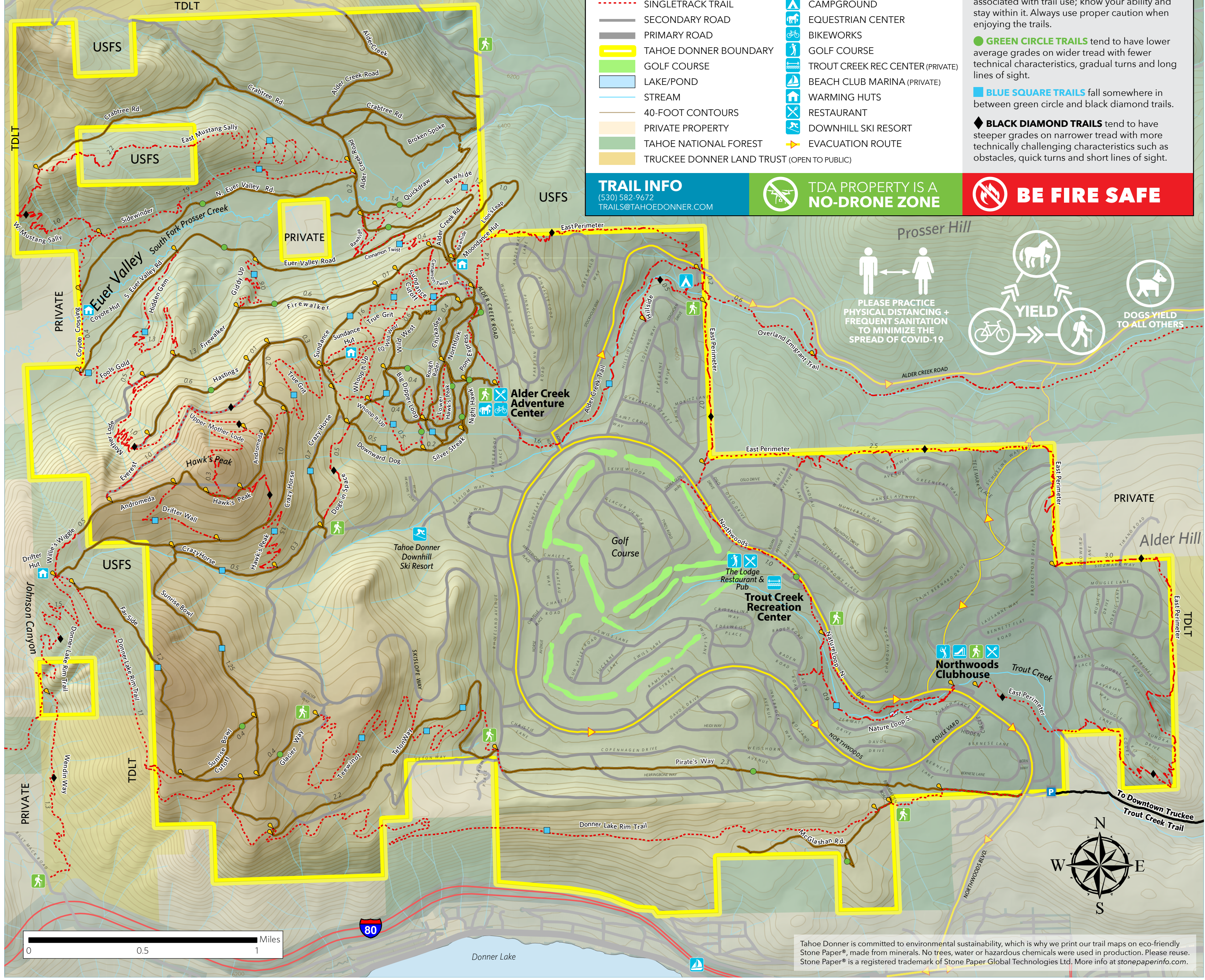
**BLACK DIAMOND TRAILS** tend to have steeper grades on narrower tread with more technically challenging characteristics such as obstacles, quick turns and short lines of sight.

### TRAIL INFO

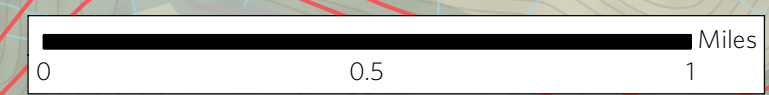
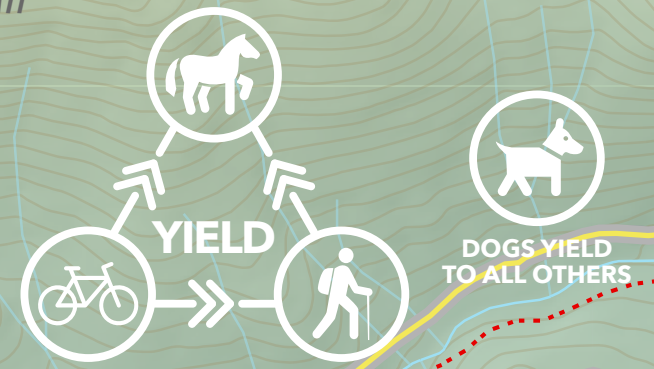
(530) 582-9672  
[TRAILS@TAHOEDONNER.COM](mailto:TRAILS@TAHOEDONNER.COM)

TDA PROPERTY IS A **NO-DRONE ZONE**

**BE FIRE SAFE**



PLEASE PRACTICE PHYSICAL DISTANCING + FREQUENT SANITATION TO MINIMIZE THE SPREAD OF COVID-19



Tahoe Donner is committed to environmental sustainability, which is why we print our trail maps on eco-friendly Stone Paper®, made from minerals. No trees, water or hazardous chemicals were used in production. Please reuse. Stone Paper® is a registered trademark of Stone Paper Global Technologies Ltd. More info at [stonepaperinfo.com](http://stonepaperinfo.com).